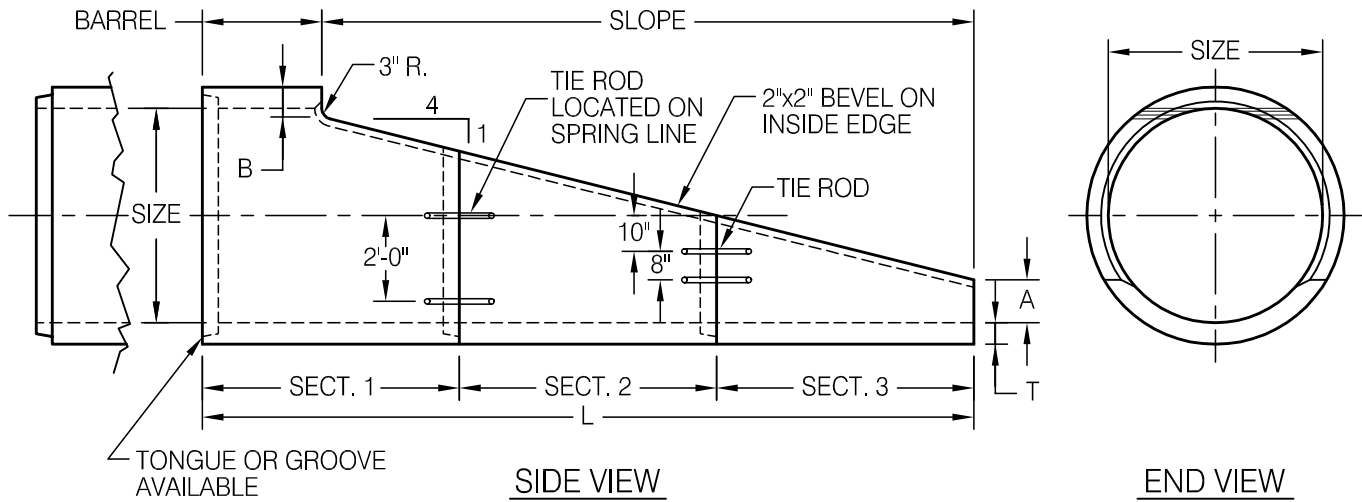


REINFORCED CONCRETE PIPE SLOPED END SECTION DETAILS



SIZE	T	A	B	SLOPE	BARREL	L	SECTION 1		SECTION 2		SECTION 3	
INCHES	INCHES	INCHES	INCHES	FEET	FEET	FEET	LENGTH	WEIGHT	LENGTH	WEIGHT	LENGTH	WEIGHT
24	3	6 7/8	5 1/8	5'-0"	3'-0"	8'-0"	8'-0"	1600	-	-	-	-
30	3 1/2	9 5/8	5 7/8	6'-0"	2'-0"	8'-0"	8'-0"	2150	-	-	-	-
36	4	12	6 1/4	7'-3"	1'-3"	8'-6"	8'-6"	2950	-	-	-	-
42	4 1/2	12	6 7/8	9'-2 1/2"	2'-9 1/2"	12'-0"	6'-0"	3500	6'-0"	2150	-	-
48	5	12	7 3/8	11'-2 1/2"	2'-9 1/2"	14'-0"	8'-0"	5550	6'-0"	2500	-	-
54	5 1/2	12	7 7/8	13'-2 1/2"	2'-9 1/2"	16'-0"	8'-0"	6950	8'-0"	4100	-	-
60	6	12	8 3/8	15'-2 1/2"	2'-9 1/2"	18'-0"	6'-0"	6800	6'-0"	4650	6'-0"	3300
66	6 1/2	12	8 7/8	17'-2 1/2"	2'-9 1/2"	20'-0"	8'-0"	10200	6'-0"	5200	6'-0"	3800
72	7	12	9 3/8	19'-2 1/2"	2'-9 1/2"	22'-0"	8'-0"	12050	8'-0"	8050	6'-0"	4250

Notes:

Reinforcing steel and concrete per AASHTO M170.
Reinforcement shall conform to standard reinforced concrete pipe Class II, located at center of wall.

Copyright © 1999 The Cretex Companies, Inc.
All rights reserved. Information on this document is subject to change without notice.



IOWA CONCRETE PRODUCTS CO.

WEST DES MOINES, IOWA

REINFORCED CONCRETE PIPE
SLOPED END SECTION DETAILS

SCALE NOT TO SCALE DATE JAN. 1, 1999 DWG. NO. ICP/CRCP/SLOPE